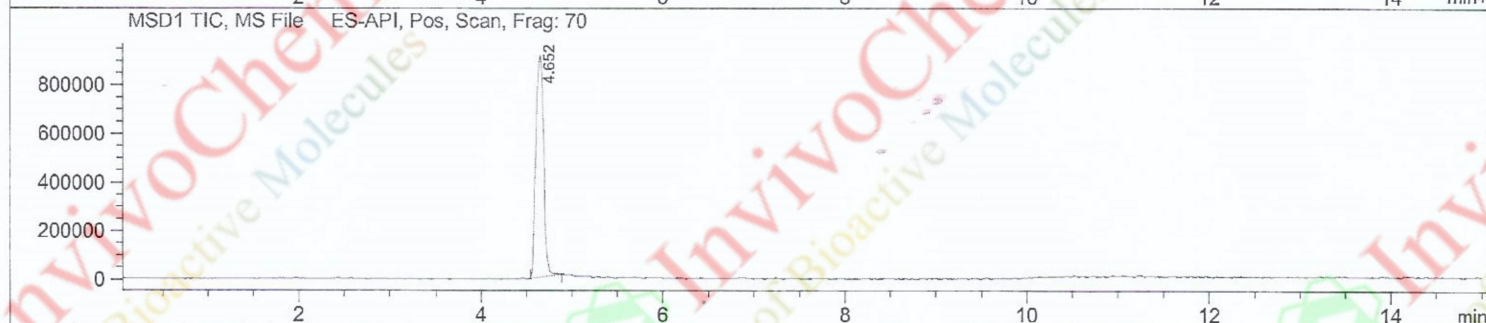
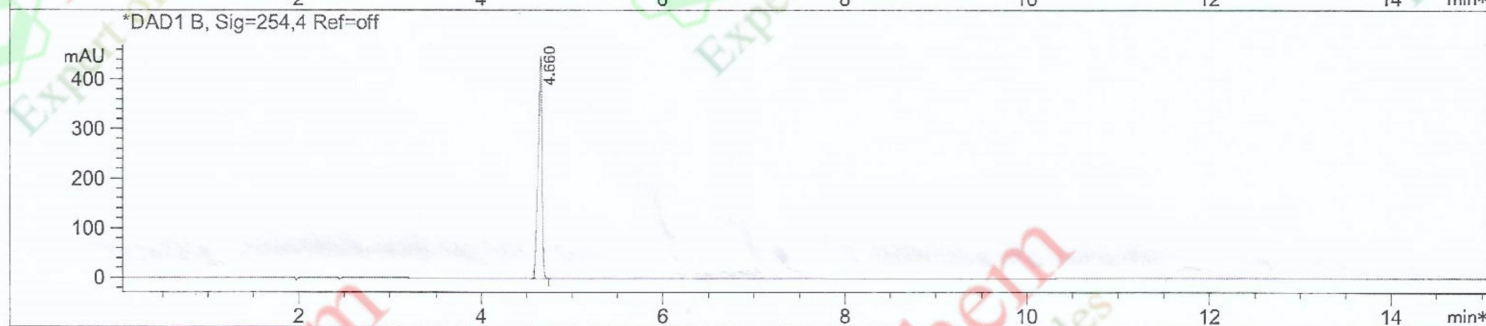
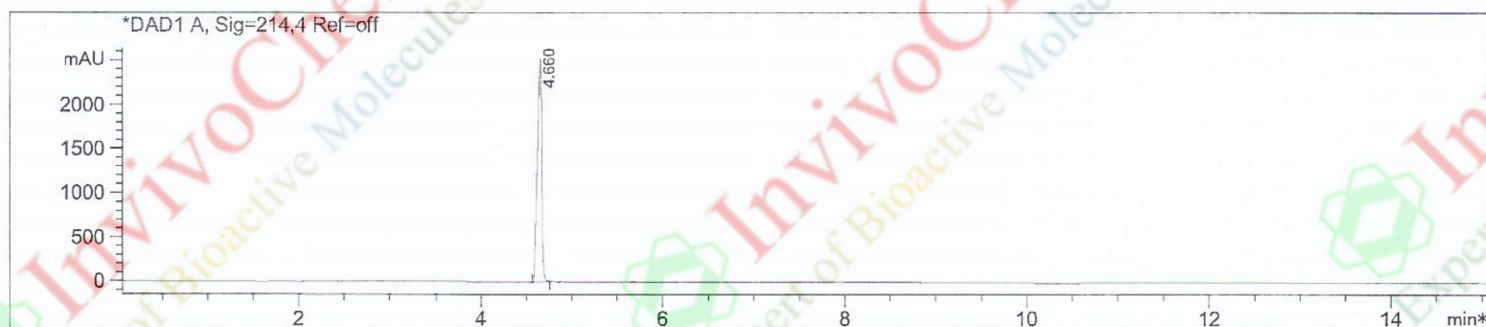


Method Info : Mobile Phase: A: water (0.01%TFA) B: ACN (0.01%TFA)
 Gradient: 5%B increase to 95%B within 8 min, 95%B for 7 min.
 Flow Rate: 1.0ml/min
 Column: YMC-Pack Pro C18, 4.6*150mm, 3 um
 Column Temperature: 40C
 Detection: UV (214, 4nm) and MS (ESI, Pos mode, 110 to 1500 amu)



Integration Results for DAD1 A, Sig=214,4 Ref=off

RetTim	Width	Area	Height	Area%
4.66	0.05	8236.14	2520.20	100.00

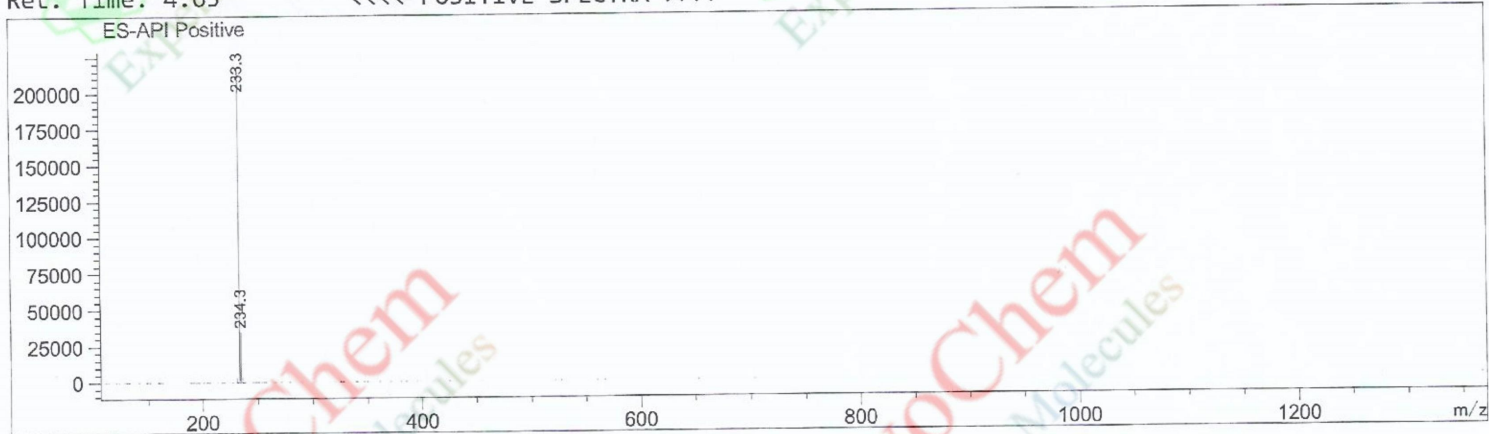
Integration Results for DAD1 B, Sig=254,4 Ref=off

RetTim	Width	Area	Height	Area%
4.66	0.04	1303.92	446.87	100.00

Product Name: Zalsupindole
 InvivoChem Cat #: V95000
 CAS #: 2481740-94-5
 Batch #: V9500001
 Formula: C₁₄H₂₀N₂O
 Molecular Weight: 232.32

Ret. Time: 4.65

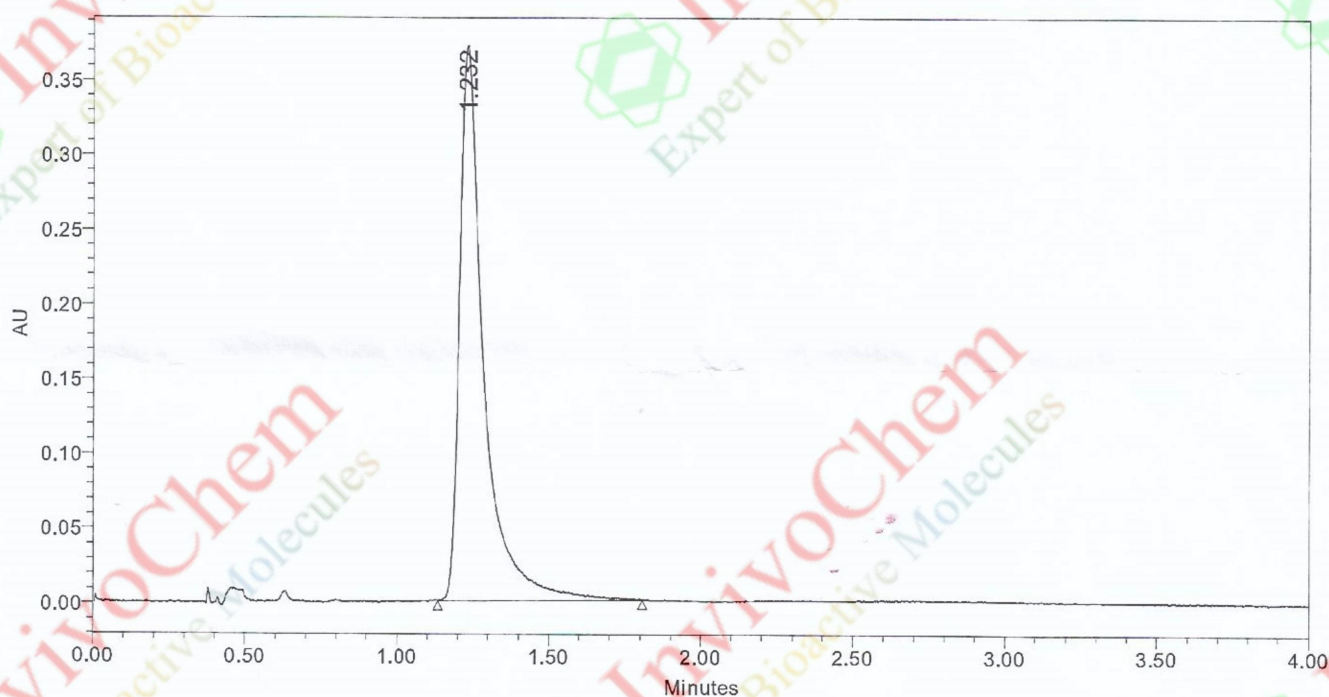
<<<< POSITIVE SPECTRA >>>>



Product Name: Zalsupindole
InvivoChem Cat #: V95000
CAS #: 2481740-94-5
Batch #: V9500001
Formula: C₁₄H₂₀N₂O
Molecular Weight: 232.32
Exact Mass: 232.15756326

Acq. Method Set: 30% B1
Co_Solvent: MeOH[0.2%NH3(7M in MeOH)]
Channel Name: PDA Ch1 214nm@4.8nm
Proc. Chnl. Descr.: PDA Ch1 214nm@4.8nm

Vial: 1:A,8
Injection Volume: 5.00 ul
Run Time: 5.0 Minutes
Flow_rate: 3.0 mL/min
Back_Pressure: 2000 psi
Column_Temperature: 40°C



	RT	Area	% Area	Height
1	1.232	2054863	100.00	371334